



Color Care Franchise Launch Assets



launch hero retail vitrine:

Franchise: Color Care

TERM: Two years, 3/19/19-3/19/21.
With option to renew.

TERRITORY: Worldwide

Usage: Including in-store, retail & salon catalogs,
all digital (web, .com, social), marketing materials,
collateral, and internal.



Campaign Hero

Click Image to Download →

launch hero retail vitrine:

Franchise: Color Care

Term: Two years, 3/19/19-3/19/21.
With option to renew.

Territory: Worldwide

Usage: Including in-store, retail & salon catalogs,
all digital (web, .com, social), marketing materials,
collateral, and internal.

Click Image to Download →



new!

outsmart your color.

our breakthrough **Color Care system***
makes hair color last 2x longer.**

Traditional Prestige Color Care Shampoo + Conditioner		Living Proof Color Care System*	
			
BEFORE	AFTER 6 WEEKS	BEFORE	AFTER 6 WEEKS
Leaves Hair Brassy	Reduces Brassiness	Leaves Hair Faded	Maintains Rich Tone

 *Color Care Shampoo, Conditioner and Whipped Glaze **Compared to a traditional prestige color care shampoo and conditioner

Campaign Hero

launch hero model light: julia

Franchise: Color Care

Product: Color Care Shampoo, Conditioner and Whipped Glaze - Light

Term: Two years, 3/19/19-3/19/21.
With option to renew.

Territory: Worldwide

Usage: Including in-store, retail & salon catalogs, all digital (web, .com, social), marketing materials, collateral, and internal.

Click Image to Download →



Hero



Alt. Hero

launch hero model light: hali

Franchise: Perfect hair Day™

Product: Color Care Shampoo, Conditioner and Whipped Glaze - Light

Term: Two years, 3/19/19-3/19/21.
With option to renew.

Territory: Worldwide

Usage: Including in-store, retail & salon catalogs, all digital (web, .com, social), marketing materials, collateral, and internal.

[Click Image to Download →](#)



Hero

launch hero model

dark: tiffany

Franchise: Color Care

Product: Color Care Shampoo, Conditioner and Whipped Glaze - Dark

Term: Two years, 3/19/19-3/19/21.
With option to renew.

Territory: Worldwide

Usage: Including in-store, retail & salon catalogs, all digital (web, .com, social), marketing materials, collateral, and internal.

[Click Image to Download →](#)



Hero

launch hero model dark: claire

Franchise: Color Care

Product: Color Care Shampoo, Conditioner and Whipped Glaze - Dark

Term: Two years, 3/19/19-3/19/21.
With option to renew.

Territory: Worldwide

Usage: Including in-store, retail & salon catalogs, all digital (web, .com, social), marketing materials, collateral, and internal.

[Click Image to Download →](#)



Hero

proof: before + after

Franchise: Color Care

Product: Color Care System

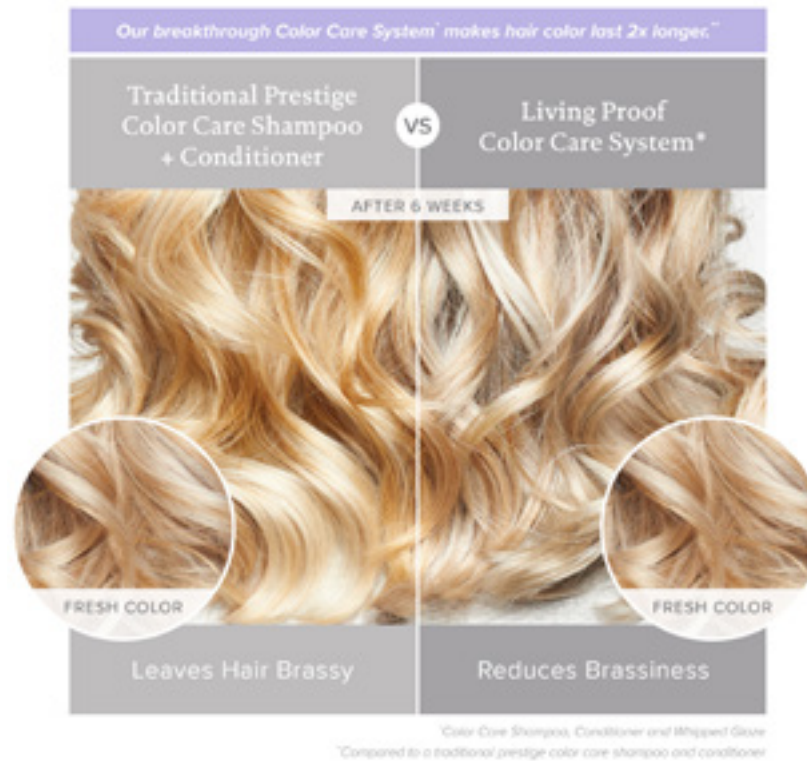
[Click Here to Download All](#)



Use for Whipped Glaze - Light



Use for Whipped Glaze - Dark



Use for Whipped Glaze - Light



Use for Whipped Glaze - Dark

product texture: shampoo + conditioner

Franchise: Color Care

Product: Color Care Shampoo + Conditioner

[Click Here to Download All](#)



Shampoo



Conditioner

product texture: whipped glazes

Franchise: Color Care

Product: Color Care Whipped Glazes

[Click Here to Download All](#)



Whipped Glaze - Light



Whipped Glaze - Dark

hair swatches

Franchise: Color Care

Product: Whipped Glaze

[Click Here to Download All](#)

choose your whipped glaze based on the *lightest color* in your hair.



color wheel

Franchise: Color Care

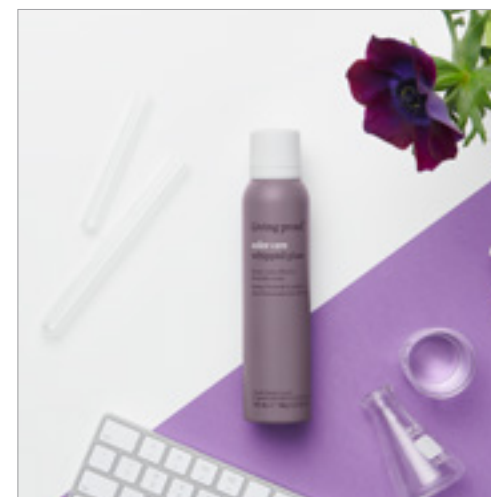
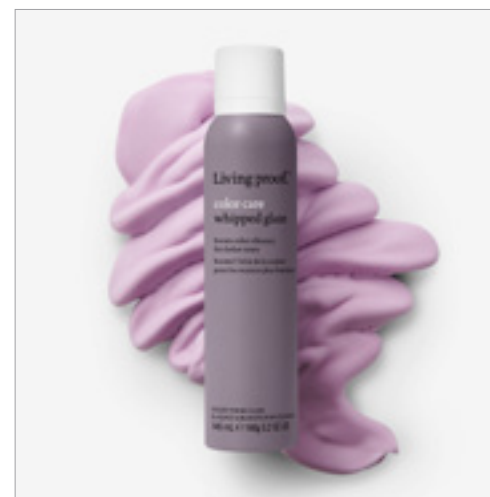
[Click Here to Download All](#)



product photography: lifestyle

Franchise: Color Care

[Click Image to Download →](#)



product photography: franchise

Franchise: Color Care

Click Image to Download →



product photography

Franchise: Color Care

Product: Color Care Shampoo

Click Image to Download →



Color Care_Shampoo_REG



Color Care_Shampoo_LITER



Color Care_Shampoo_Jumbo



Color Care_Shampoo_TRV



Color Care_Shampoo_DLX



Color Care_Shampoo_Packette

product photography

Franchise: Color Care

Product: Color Care Conditioner

Click Image to Download →



Color Care_Conditioner_REG



Color Care_Conditioner_LITER



Color Care_Conditioner_Jumbo



Color Care_Conditioner_TRV



Color Care_Conditioner_DLX



Color Care_Conditioner_Packette

product photography

Franchise: Color Care

Product: Color Care Whipped Glaze Light

Click Image to Download →



Color Care_Whipped Glaze Light_REG



Color Care_Whipped Glaze Light_TRV

product photography

Franchise: Color Care

Product: Color Care Whipped Glaze Dark

Click Image to Download →



Color Care_Whipped Glaze Dark_REG



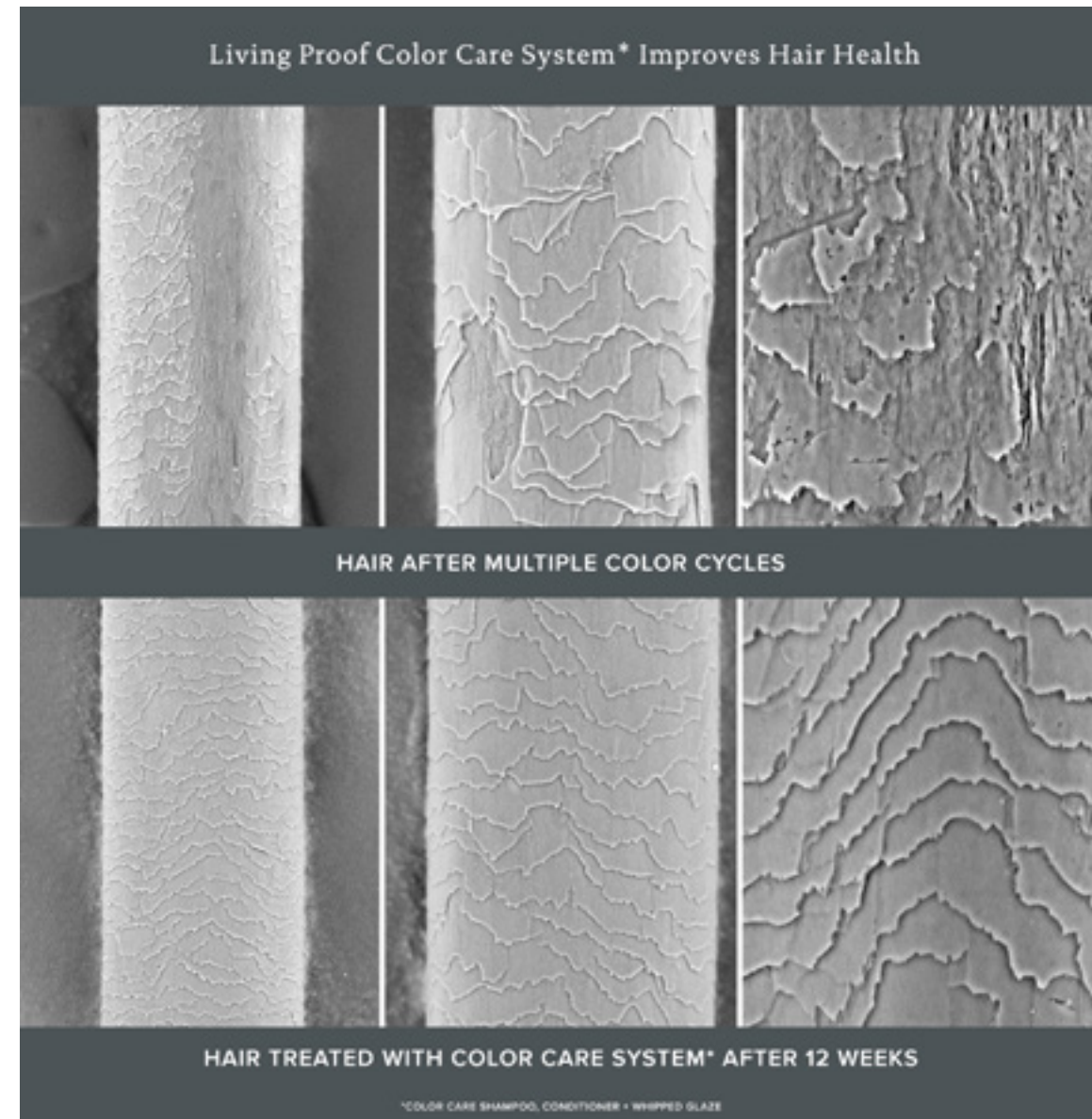
Color Care_Whipped Glaze Dark_TRV

science photography: SEM

Franchise: Color Care

Product: Color Care System

[Click Here to Download All](#)



Color Care System Use

launch materials: education

Franchise: Color Care

Product: Color Care System

Click Image to Download →



Launch Book 8.5 x 11"

Sell Sheet 8.5 x 11"

Living proof. color care shampoo

A sulfate-free, silicone-free color care shampoo that gently cleanses, nourishes and protects against UV, hard water and damage (which can cause color fading).

KEY BENEFITS

- Gently cleanses hair
- Reduces damage from wet combing with enhanced slip
- Provides protection against hard water minerals that degrade hair color
- Helps hair stay cleaner longer

THE SCIENCE

This formula is designed to care, fortify and protect your hair.

Care:

- Color-optimized surfactant blend - sulfate-free, limits stripping of the hydrophobic layer of your hair
- Slip modifiers - helps reduce the damaging effects of wet combing
- Healthy Hair Molecule (HPMA) - helps hair stay cleaner, longer

Fortify:

- Film formers & conditioning ester - enhances and replenishes the protective hydrophobic layer of your hair

Protect:

- UV filter - stays on your hair after rinsing to protect against UV rays that damage hair and fade color
- Chelating agent - binds to and removes hard water minerals, targeting copper and iron which are known to degrade your color

HAIR TYPE

Ideal for all color-treated hair types.

USAGE

Apply to wet hair. Lather. Rinse. Follow with Color Care Conditioner.

APPLICATION TIPS

Start using the Color Care Shampoo & Conditioner the next time you wash your hair post-treatment to help protect your color for long-lasting results.

FREE OF: Sulfates, Parabens, Phthalates, Formaldehyde, Resorcinol, Ammonia, Alcohol Denat.

SAFE FOR CHEMICALLY TREATED HAIR

COLOR CARE

UV PROTECTION

NO DRY FRIZZ

Living proof. color care conditioner

This conditioner forms a protective layer to help lock in color and helps replenish the outer layer often damaged during the coloring process.

KEY BENEFITS

- Lightweight conditioning
- Enhances natural shine
- Helps locks in your color
- Helps hair stay cleaner longer

THE SCIENCE

This formula is designed to care, fortify and protect your hair.

Care:

- Lightweight base - silicone-free conditioning, adds slip to the hair to prevent future damage
- Emollient blend - enhances natural shine
- Healthy Hair Molecule (HPMA) - helps hair stay cleaner, longer

Fortify:

- Locking Molecule (CPULA) - forms a hydrophobic layer on hair even after it's rinsed to help lock in your color
- Emollient & Amino acid blend - replenishes damaged hydrophobic layer, smooths the hair cuticle and enhances shine

Protect:

- UV filter - stays on your hair after rinsing to protect against UV rays that damage hair and fade color
- Cuticle Sealing Agent - seals the hair cuticle to reduce porosity and help protect against color loss

HAIR TYPE

Ideal for all color-treated hair types.

USAGE

Start with Color Care Shampoo. Then apply Color Care Conditioner; spread through hair and rinse.

APPLICATION TIPS

Start using the Color Care Shampoo & Conditioner the next time you wash your hair post-treatment to help protect your color for long-lasting results.

FREE OF: Sulfates, Parabens, Phthalates, Formaldehyde, Resorcinol, Ammonia, Alcohol Denat.

SAFE FOR CHEMICALLY TREATED HAIR

COLOR CARE

UV PROTECTION

NO DRY FRIZZ

Living proof. color care whipped glaze - light

This Whipped Glaze deposits temporary dyes to instantly boost vibrancy and counteract color fading and brassiness. For blondes and highlights.

KEY BENEFITS

- Deposits temporary dye to instantly reduces brassiness and boost color vibrancy between color treatments
- Leaves hair looking healthy, soft and shiny

THE SCIENCE

This formula is designed to care, protect and enhance your hair.

Care:

- Light conditioning base - adds softness, manageability and makes combing wet hair easier
- Emollient blend - enhances natural shine

Protect:

- UV filter - protects against UV rays that damage your hair and fade color
- Chelating agent - binds to and shields the hard water minerals from interacting with the dyes for maximum dye performance
- Hair restructuring agent - helps reveal the hair's cuticle and replenish the natural hydrophobic layer

Enhance:

- Cationic temporary dye - specially formulated dye blend illuminates lighter shades and reduces brassiness
- High refractive emulsifiers - adds shine and vibrancy
- Crème-like emollient - improves cuticle smoothing and alignment

HAIR TYPE

Ideal for all color-treated hair types.

USAGE

Shake well. Start with clean, detangled towel-dried hair. Hold can upright and dispense a small amount into palm. Working in sections, apply product from roots to ends. Comb through to evenly distribute. Apply more as needed. **DO NOT RINSE.** Wash hands after applying. Style as usual. Reapply as needed to maintain desired tone.

Application Tip: Begin using this product when you first start to see a shift in your tone. The color enhancing benefits of this product can last through multiple shampoos. For best results, apply to damp hair every other time you wash your hair.

FREE OF: Sulfates, Parabens, Phthalates, Formaldehyde, Resorcinol, Ammonia, Alcohol Denat.

SAFE FOR CHEMICALLY TREATED HAIR

COLOR CARE

UV PROTECTION

NO DRY FRIZZ

Living proof. color care whipped glaze - dark

This Whipped Glaze deposits temporary dyes to instantly boost vibrancy, counteract color fading and enhance tone. For darker tones.

KEY BENEFITS

- Deposits temporary dye to instantly reduces brassiness and boost color vibrancy between color treatments
- Leaves hair looking healthy, soft and shiny

THE SCIENCE

This formula is designed to care, protect and enhance your hair.

Care:

- Light conditioning base - adds softness, manageability and makes combing wet hair easier
- Emollient blend - enhances natural shine

Protect:

- UV filter - protects against UV rays that damage your hair and fade color
- Chelating agent - binds to and shields the hard water minerals from interacting with the dyes for maximum dye performance
- Hair restructuring agent - helps reveal the hair's cuticle and replenish the natural hydrophobic layer

Enhance:

- Cationic temporary dye - specially formulated dye blend replenishes dark shades and enhances tone
- High refractive emulsifiers - adds shine and vibrancy
- Crème-like emollient - improves cuticle smoothing and alignment

HAIR TYPE

Ideal for all color-treated hair types.

USAGE

Shake well. Start with clean, detangled towel-dried hair. Hold can upright and dispense a small amount into palm. Working in sections, apply product from roots to ends. Comb through to evenly distribute. Apply more as needed. **DO NOT RINSE.** Wash hands after applying. Style as usual. Reapply as needed to maintain desired tone.

Application Tip: Begin using this product when you first start to see a shift in your tone. The color enhancing benefits of this product can last through multiple shampoos. For best results, apply to damp hair every other time you wash your hair.

FREE OF: Sulfates, Parabens, Phthalates, Formaldehyde, Resorcinol, Ammonia, Alcohol Denat.

SAFE FOR CHEMICALLY TREATED HAIR

COLOR CARE

UV PROTECTION

NO DRY FRIZZ

Living proof. outsmart your color.

our breakthrough Color Care system makes hair color last 2x longer.*

COLOR CARE SHAMPOO

A sulfate-free, silicone-free color care shampoo that gently cleanses, nourishes and protects against UV, hard water and damage (which can cause color fading).

COLOR CARE CONDITIONER

A conditioner that forms a protective layer to help lock in color and helps replenish the outer layer often damaged during the coloring process.

COLOR CARE WHIPPED GLAZE - LIGHT

A whipped glaze that deposits temporary dyes to instantly boost vibrancy, counteract color fading and brassiness. For blondes and highlights.

COLOR CARE WHIPPED GLAZE - DARK

A whipped glaze that deposits temporary dyes to instantly boost vibrancy, counteract color fading and enhance tone. For darker tones.

FREE OF: Sulfates, Parabens, Phthalates, Formaldehyde, Resorcinol, Ammonia, Alcohol Denat.

SAFE FOR CHEMICALLY TREATED HAIR

COLOR CARE

UV PROTECTION

NO DRY FRIZZ

launch materials: merchandising

Franchise: Color Care

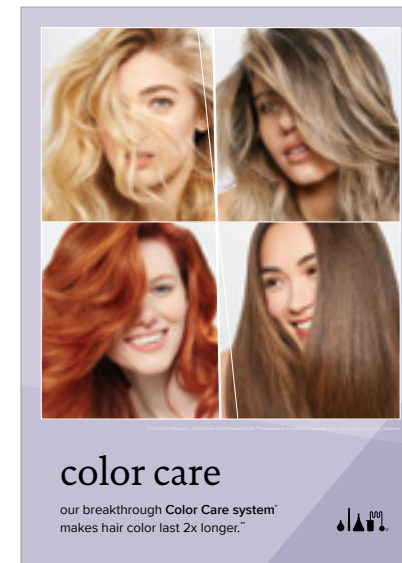
Product: Color Care System

Click Image to Download →

Cashwrap



Evergreen Sign 5 x 7"



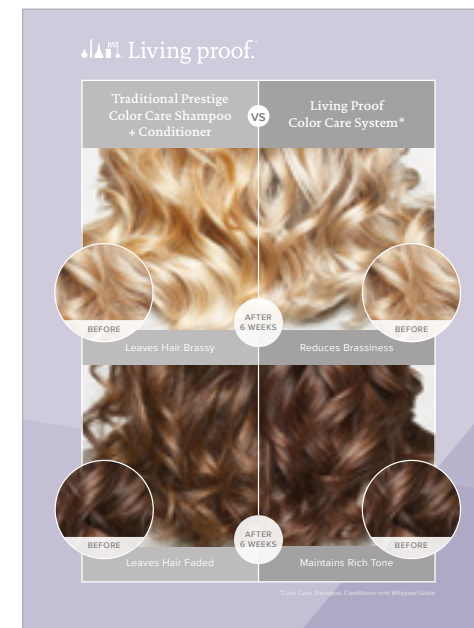
Window Cling 12 x 16"



Shelf Talker



Shelf Sign Sign 6 x 8"



Mirror Cling 5.5 x 4.75"



launch materials: video

Franchise: Color Care

Click Image to Download →



Usage Video



Usage Video without text

launch materials: social photo, facebook + instagram

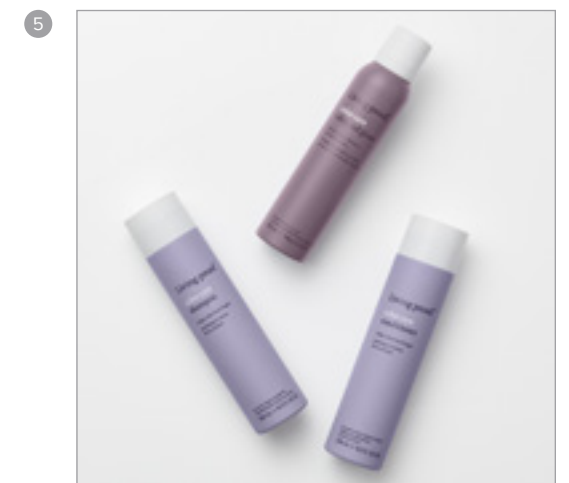
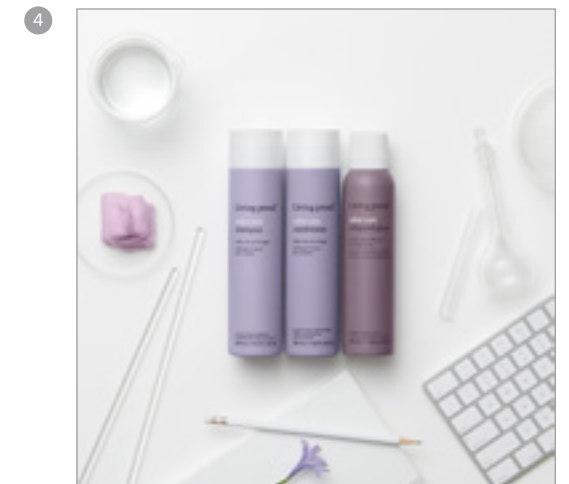
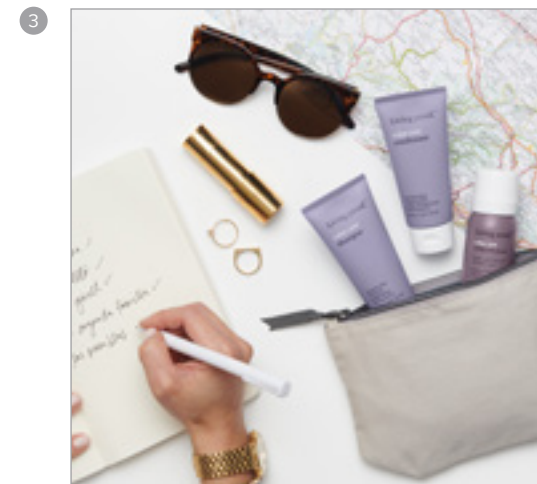
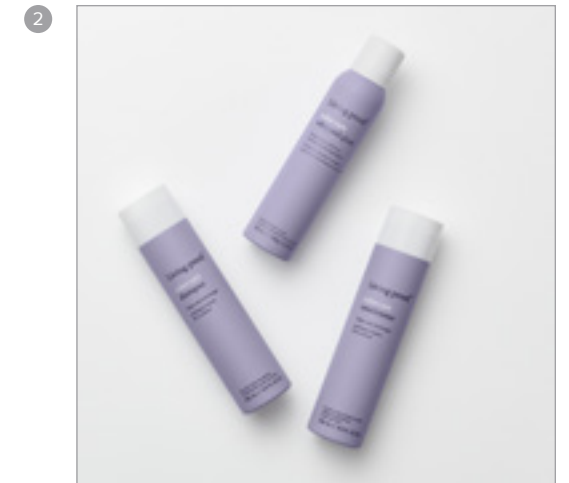
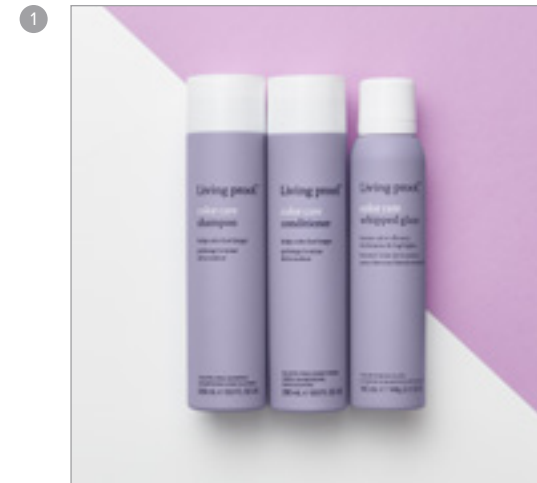
Franchise: Color Care

Must use provided copy.

Include @LivingProofInc #crueltyfree #nontoxic #parabenfree #siliconefree #phthalatefree #sulfatefree

- 1 No color fade here. Our new Color Care system makes hair color last 2x longer than a traditional prestige color care shampoo and conditioner. #OutsmartYourColor.
- 2 NEW: a system that makes your hair color last 2X LONGER than a traditional prestige color care shampoo and conditioner. Meet Color Care, our latest brainchild. #OutsmartYourColor
- 3 Color care you can rely on, whatever your plans. Our Color Care system makes hair color last 2x longer than a traditional prestige color care shampoo and conditioner, so you can go longer between color appointments. #OutsmartYourColor
- 4 *NEW* The latest innovation from our lab. Our Color Care franchise featuring Shampoo, Conditioner and Whipped Glazes in 2 shades (for blondes and for darker shades) was created to make your color last longer. #OutsmartYourColor
- 5 *NEW* Introducing our Color Care line. It protects your color AND improves the health of your hair. Color Care Shampoo + Conditioner lock in your color, while Whipped Glaze adds a layer of temporary dye that boosts color vibrancy in-between color treatments. #OutsmartYourColor

[Click Here to Download All](#)



launch materials: social photo, facebook + instagram cond.

Franchise: Color Care

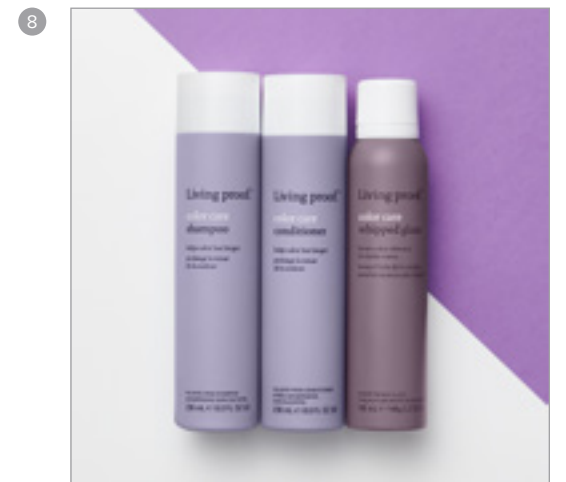
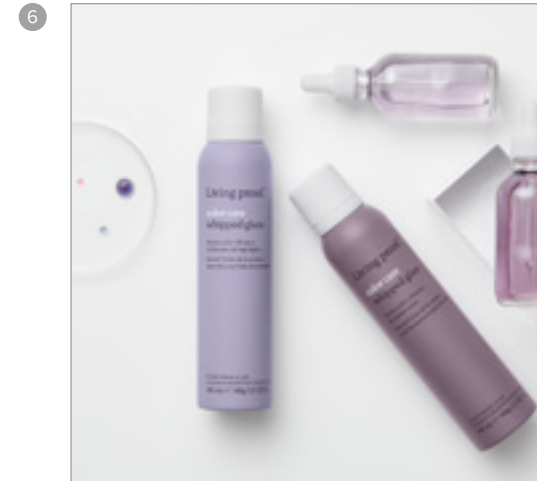
Must use provided copy.

Include @LivingProofInc #crueltyfree #nontoxic #parabenfree #siliconefree #phthalatefree #sulfatefree

- 6 How do our new Color Care Whipped Glazes work?
 - ✓ Temporary dye (2 shades, for light and dark) are specially formulated dye blend boosts color
 - ✓ Light conditioning base: adds softness without the weight
 - ✓ Emollient blend gives natural shine
 - ✓ UV filter protects against UV damage
 - ✓ Chelating agent binds to hard water minerals to ensure maximum dye performance
 - ✓ Hair restructuring agent mimics the hair's natural cuticle sealing
 - ✓ High refractive emollients add shine and vibrancy
 - ✓ Ceramide-like emollient smoothes the cuticle

#OutsmartYourColor
- 7 Purple isn't just for blondes. 💜 Here's what shade of Color Care Whipped Glaze to choose based on what color you dye your hair:
Light shade: for blondes, highlights, and balayage. It deposits temporary dyes to instantly boost vibrancy and counteract color fading and brassiness.
Dark shade: for single process darker colors, brunettes, and darker reds. It deposits temporary dyes to instantly boost color vibrancy, counteract color fading and rebalance tone.
#OutsmartYourColor
- 8 Our newest breakthrough. Meet Color Care, a color-protecting system that makes your color last longer AND makes your hair look and feel healthier. Ideal for all color treated hair types. #OutsmartYourColor

[Click Here to Download All](#)



launch materials: social photo, facebook + instagram cond.

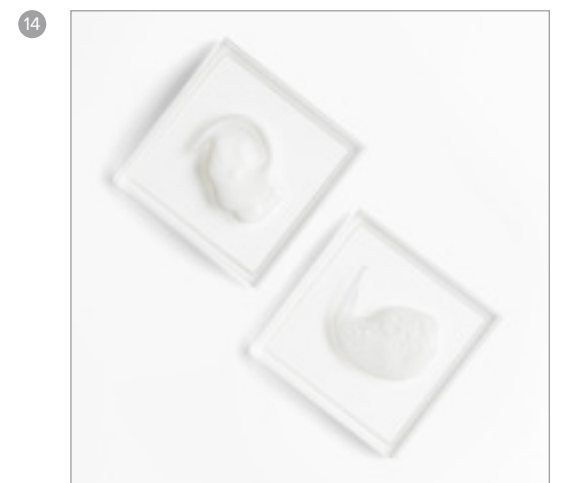
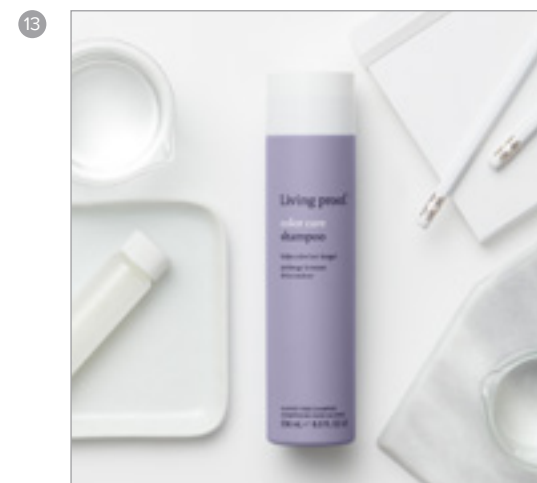
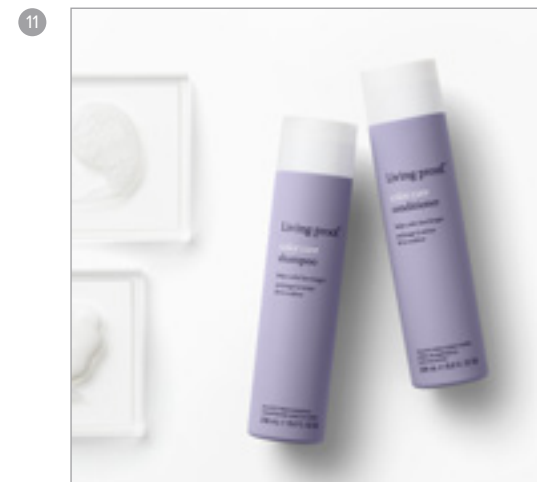
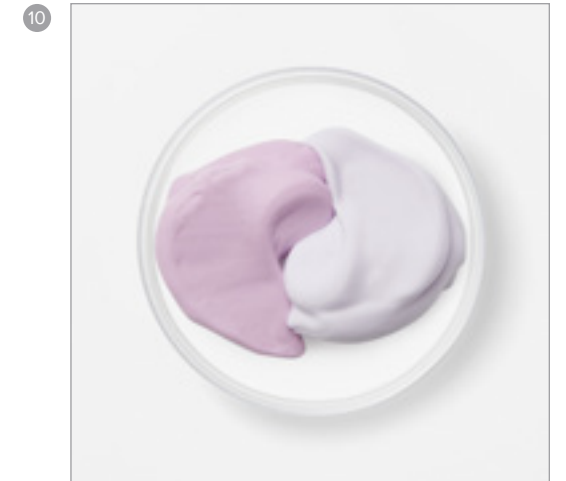
Franchise: Color Care

Must use provided copy.

Include @LivingProofInc #crueltyfree #nontoxic #parabenfree #siliconefree #phthalatefree #sulfatefree

- 9 Purple isn't just for blondes. 💜 Color Care Whipped Glaze in the Dark shade deposits temporary dyes to instantly boost vibrancy, counteract color fading and rebalance tone for darker shades between color appointments. #OutsmartYourColor
- 10 Our Color Care Whipped Glaze comes in two shades; a light shade for blondes and highlights, and a dark shade for darker tones. 💜 The whipped texture makes these temporary dyes super easy to distribute. Spread on damp hair, then style as usual. #OutsmartYourColor
- 11 *NEW* You lose the most color during the first few washes after coloring your hair. Start using the Color Care Shampoo + Conditioner right after your color service to help protect your color from washing out. #OutsmartYourColor
- 12 Calling all blondes! 💜 🧴 Rebalance tone and reduce brassiness with Color Care Whipped Glaze in the Light shade. Spread this whipped cream-like temporary dye on damp hair before you style. #OutsmartYourColor
- 13 Our new Color Care Shampoo is a sulfate-free, silicone-free color care shampoo that gently cleanses, nourishes and protects against UV exposure, hard water and damage, which can cause color fading. #OutsmartYourColor
- 14 Wondering why our Color Care Shampoo + Conditioner aren't purple? They were designed to deal with color washout, damage, UV damage and hard water in all colors—not just for blondes. #OutsmartYourColor

[Click Here to Download All](#)



launch materials: social photo, facebook + instagram cond.

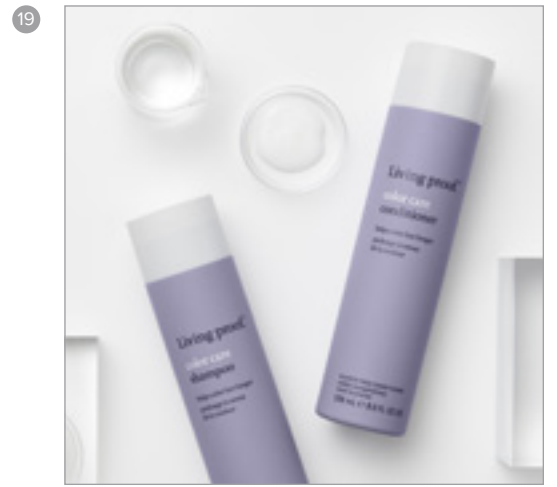
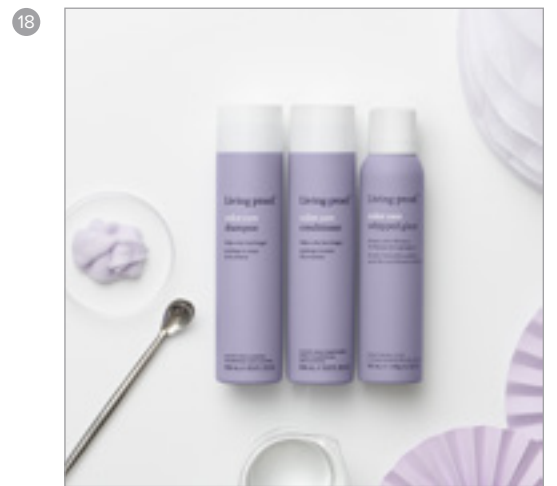
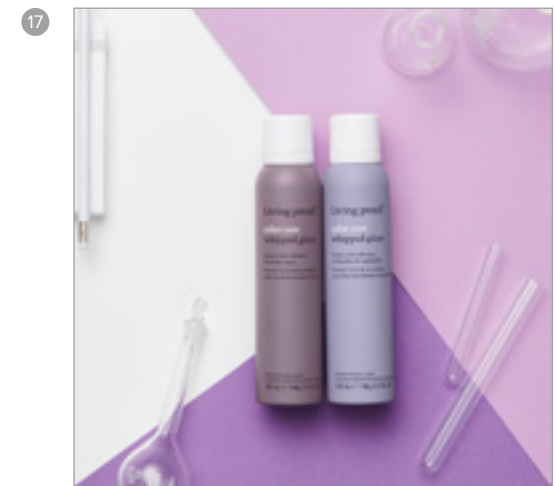
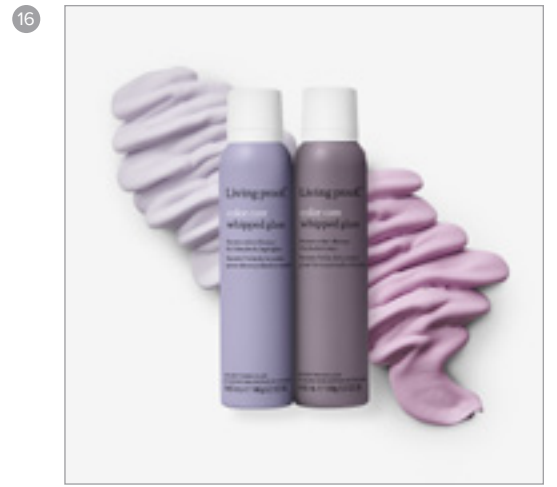
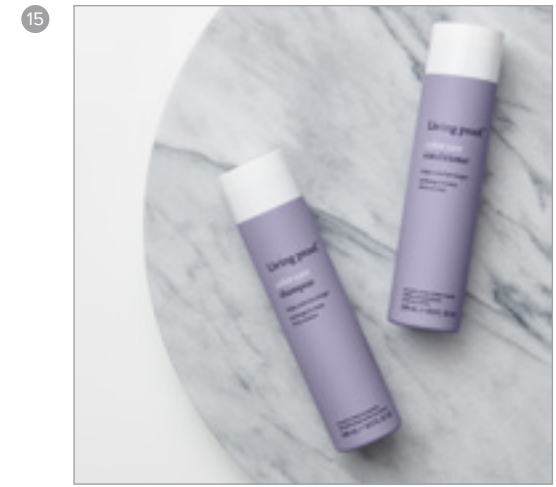
Franchise: Color Care

Must use provided copy.

Include @LivingProofInc #crueltyfree #nontoxic #parabenfree #siliconefree #phthalatefree #sulfatefree

- 15 How do our Color Care Shampoo + Conditioner work together? Color Care Shampoo is a sulfate-free, silicone-free color care shampoo that gently cleanses, nourishes and protects. Color Care Conditioner forms a protective layer to help lock in color and helps replenish the outer layer often damaged during the coloring process. #OutsmartYourColor
- 16 Why did our scientists develop a whipped texture for our new Color Care Glazed Whips? The creamy format makes it easy to spread this temporary dye on damp hair (without weighing it down). #OutsmartYourColor
- 17 Fight color fade. Our new Color Care Whipped Glazes deposit temporary dyes to make your color look more vibrant. Use the lighter shade for blondes, highlights and balayage. Choose the darker shade for single process darker colors, brunettes, and darker reds. #OutsmartYourColor
- 18 *NEW* Meet our Color Care line. Side effects may include less frequent appointments with your colorist. #OutsmartYourColor
- 19 🌿 Our new Color Care Shampoo + Conditioner care for, fortify, and protect your hair so your color lasts longer. #OutsmartYourColor

[Click Here to Download All](#)



launch materials: social photo, facebook + instagram cond.

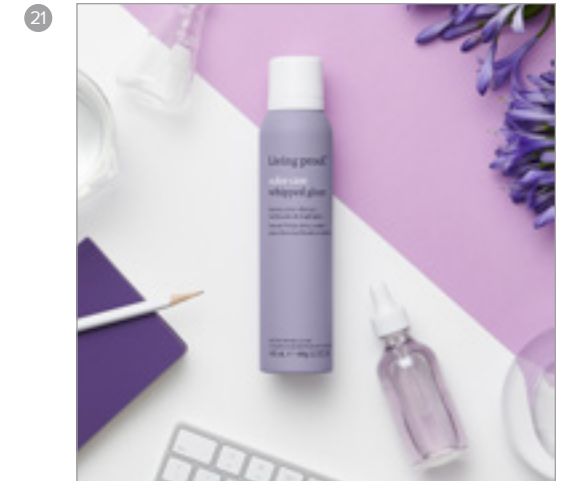
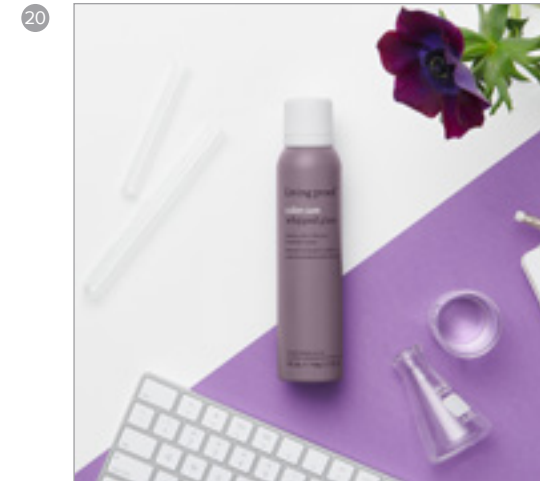
Franchise: Color Care

Must use provided copy.

Include @LivingProofInc #crueltyfree #nontoxic #parabenfree #siliconefree #phthalatefree #sulfatefree

- 20 ✨Color Care Whipped Glaze leaves hair looking healthy, shiny, and vibrant between color appointments. ✨The Dark shade was formulated for single process darker colors, brunettes, and darker reds. #OutsmartYourColor
- 21 Bye, brassiness. 🙌Our Color Care Whipped Glaze in the Light shade was formulated to boost vibrancy and nix brassiness for blondes, highlights, and balayage. #OutsmartYourColor
- 22 💜💜💜 We're not kidding when we say we went through over a hundred dye shades to get our Color Care Whipped Glazes JUST RIGHT. The Light shade is formulated with more blue to counteract brassiness in blondes and lighter shades, while the Dark shade has more red to boost vibrancy in darker tones. #OutsmartYourColor

[Click Here to Download All](#)



launch materials: social photo, facebook + instagram cond.

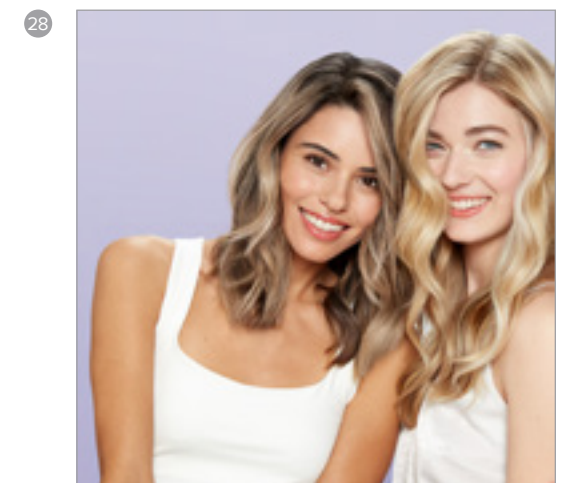
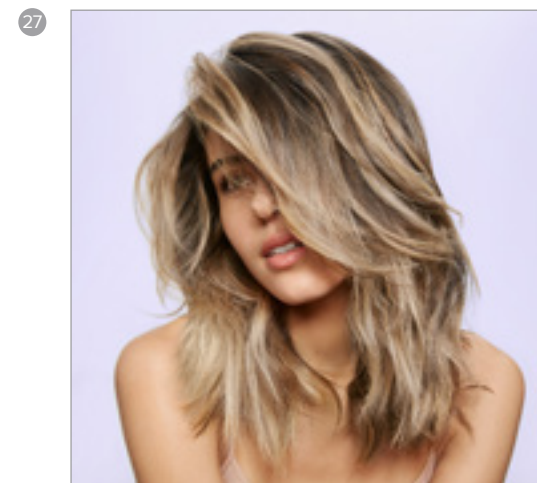
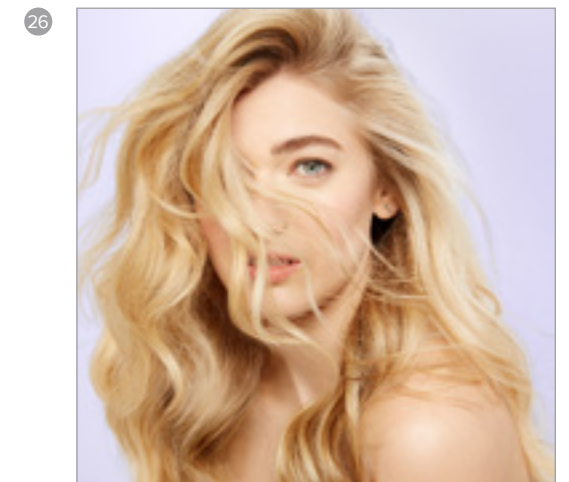
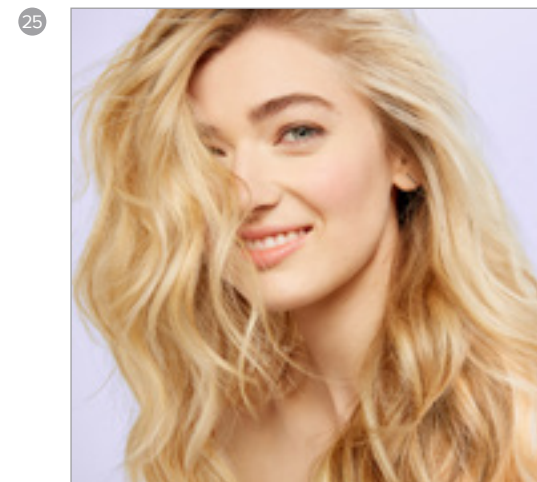
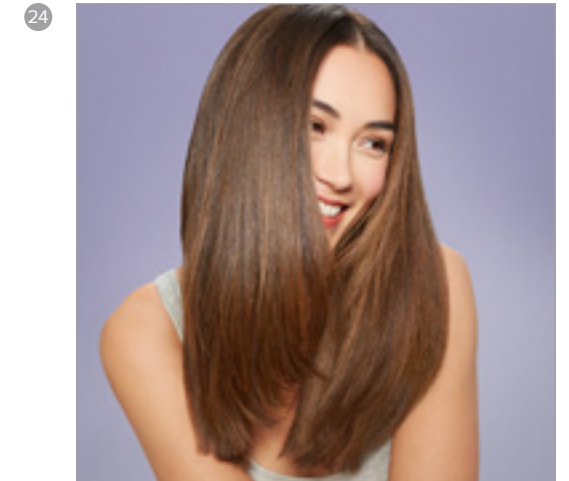
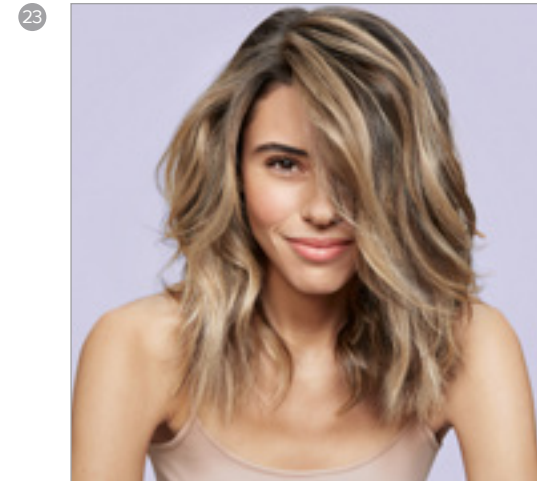
Franchise: Color Care

Must use provided copy.

Include @LivingProofInc #crueltyfree #nontoxic #parabenfree #siliconefree #phthalatefree #sulfatefree

- 23 Stop color fading and improve the health of your hair without any trade-offs. Our new Color Care line makes color last 2x longer than a traditional prestige color care shampoo and conditioner. #OutsmartYourColor
- 24 Game. Changer. Our Color Care system makes color last 2x longer.* Made for anyone who colors their hair. #OutsmartYourColor
*compared to a traditional prestige color care shampoo and conditioner.
- 25 Highlights are expensive. Protect that investment and make your color last 2x longer with our new Color Care system (compared to a traditional prestige color care shampoo and conditioner). For blonde hair, select the Light shade Color Care Whipped Glaze. #OutsmartYourColor
- 26 Finally go longer between color appointments. Our Color Care system makes color last 2x longer than a traditional prestige color care shampoo and conditioner. #OutsmartYourColor
- 27 Hit pause on color fading with our new Color Care system. #OutsmartYourColor
- 28 Your color starts to fade the moment you leave the salon. And the more damaged your hair is, the faster it fades. Our new Color Care system cares for, fortifies, and protects your hair for color that lasts longer. #OutsmartYourColor

[Click Here to Download All](#)



launch materials: social photo, facebook + instagram cond.

Franchise: Color Care

Must use provided copy.

Include @LivingProofInc #crueltyfree #nontoxic #parabenfree #siliconefree
#phthalatefree #sulfatefree

- 29 Our new Color Care system protects and enhances your color while improving the health of your hair over time. Color Care Shampoo + Conditioner and Whipped Glazes are available now. #OutsmartYourColor
- 30 You asked. We listened. Introducing Color Care, our brand new system designed to make hair color last longer. #OutsmartYourColor

[Click Here to Download All](#)

29



30



launch materials: social photo, facebook + instagram cond.

Franchise: Color Care

Must use provided copy.
Include @LivingProofInc #crueltyfree #nontoxic #parabenfree #siliconefree
#phthalatefree #sulfatefree

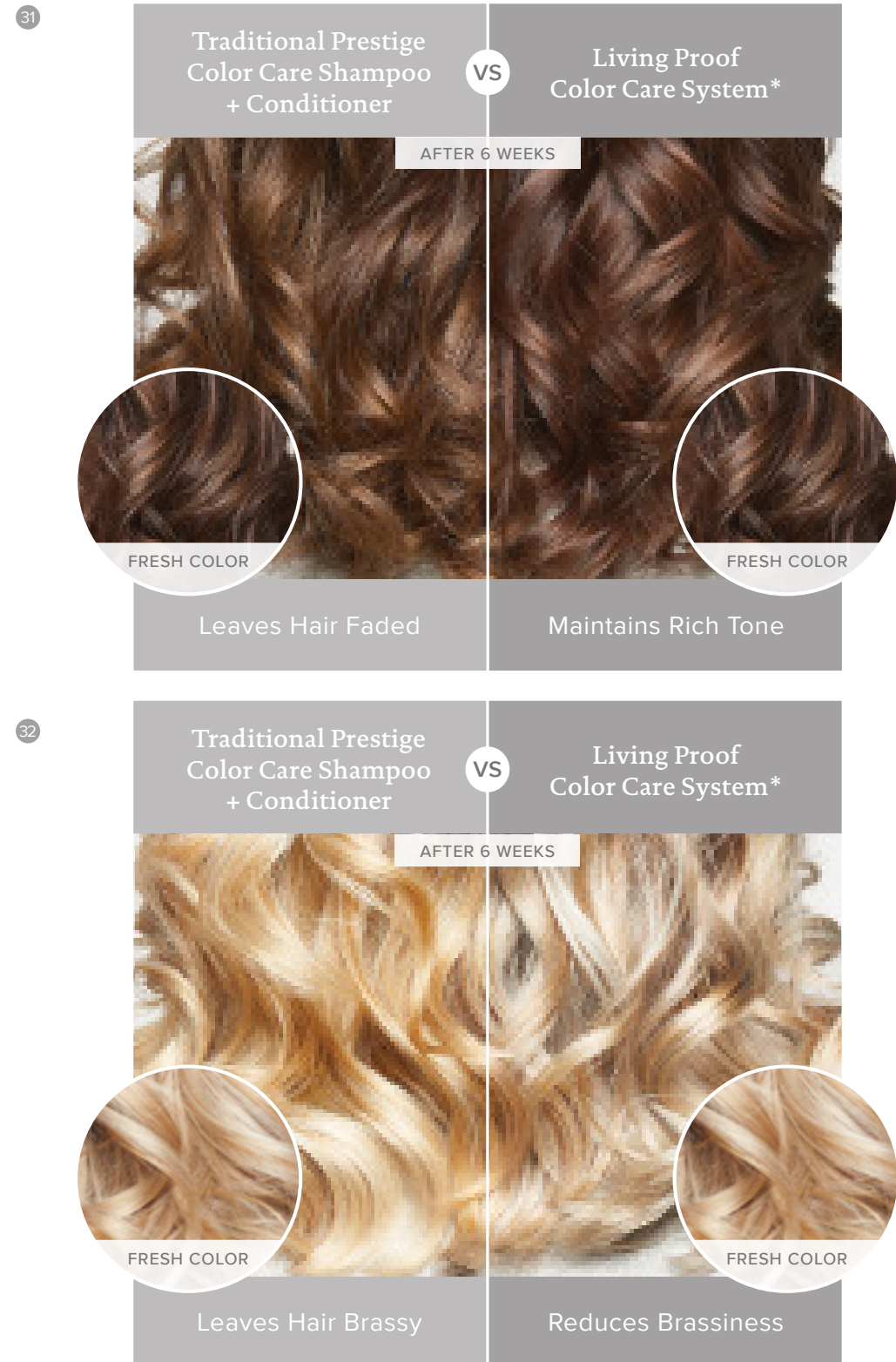
31 Option 1
Our Color Care System (Shampoo, Conditioner and Whipped Glaze) maintains rich tones, compared to a traditional prestige color care shampoo and conditioner which leaves color faded. #OutsmartYourColor

Option 2
Make your hair color last 2x longer with our Color Care System (Shampoo, Conditioner and Whipped Glaze), compared to a traditional prestige color care shampoo and conditioner #OutsmartYourColor

32 Option 1
Our Color Care System (Shampoo, Conditioner and Whipped Glaze) reduces brassiness and keeps blonde hair healthy, compared to a traditional prestige color care shampoo and conditioner which leaves color brassy. #OutsmartYourColor

Option 2
Make your hair color last 2x longer with our Color Care System (Shampoo, Conditioner and Whipped Glaze), compared to a traditional prestige color care shampoo and conditioner #OutsmartYourColor

[Click Here to Download All](#)



launch materials: social gif, facebook + instagram cond.

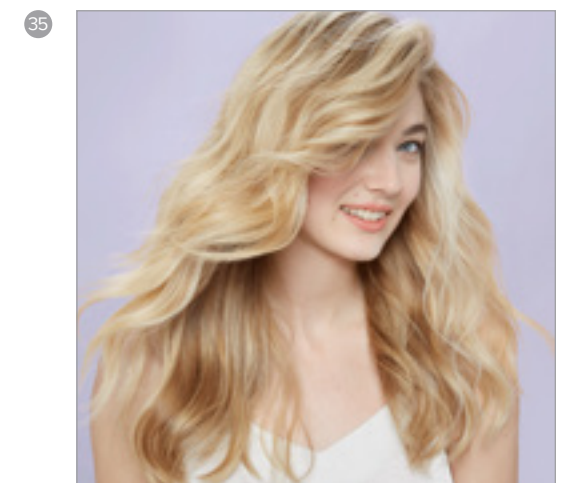
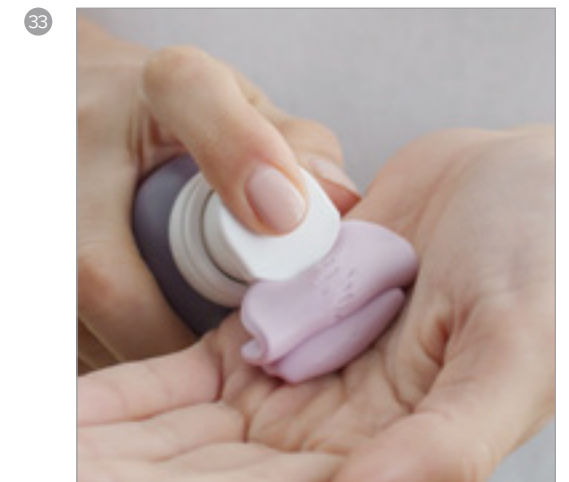
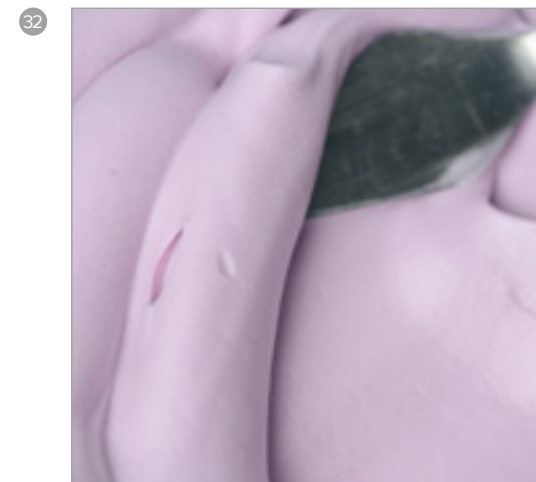
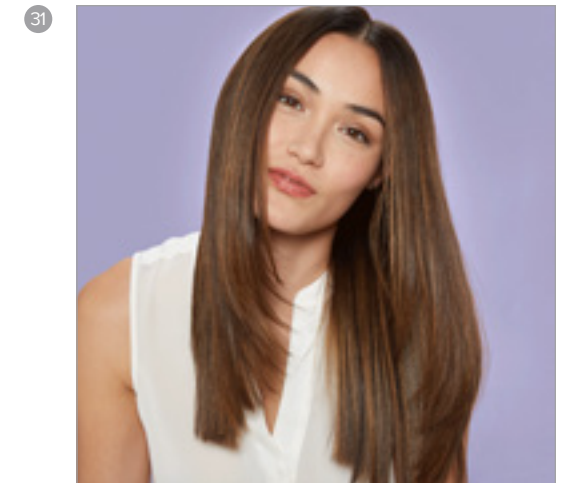
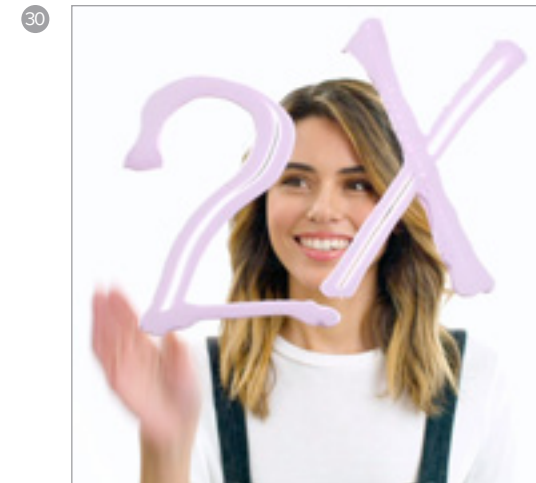
Franchise: Color Care

Must use provided copy.

Include @LivingProofInc #crueltyfree #nontoxic #parabenfree #siliconefree #phthalatefree #sulfatefree

- 30 Your color care solution is here. Our scientists developed our new Color Care system to make color last 2x longer compared to a traditional prestige color care shampoo and conditioner. #OutsmartYourColor
- 31 Tired of your color fading fast? Not anymore. Meet our Color Care line. Proven to make color last 2x longer.* #OutsmartYourColor
*compared to a traditional prestige color care shampoo and conditioner.
- 32 So #OddlySatisfying. Begin using Color Care Whipped Glaze when you first start to see a shift in your tone after coloring hair. For best results, apply to damp hair after every other time you wash your hair. #OutsmartYourColor
- 33 🎵 whip it good 🎵 Color Care Whipped Glaze is a leave-in temporary dye treatment that boosts your hair color between color appointments. #OutsmartYourColor
- 34 Purple's not just for blondes. Our Color Care Whipped Glazes are actually carefully formulated with specific ratios of red and blue (NOT purple) dye. The Light shade counteracts brassiness in blondes, and the Dark shade boosts vibrancy in darker tones. #OutsmartYourColor
- 35 Our goal was simple. Create color care products that work. Our new Color Care system makes color last 2x longer than a traditional prestige color care shampoo and conditioner. #OutsmartYourColor

[Click Here to Download All](#)



launch materials: social gif, facebook + instagram cond.

Franchise: Color Care

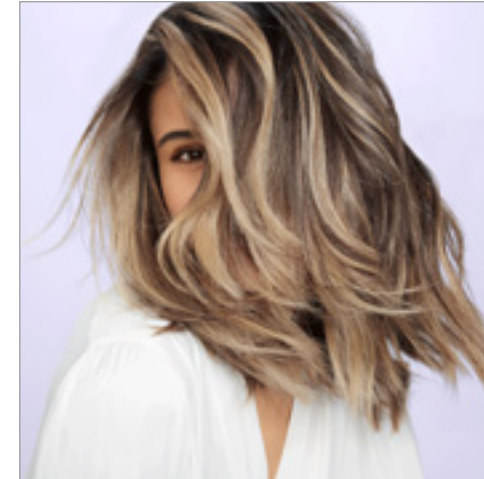
Must use provided copy.

Include @LivingProofInc #crueltyfree #nontoxic #parabenfree #siliconfree
#phthalatefree #sulfatefree

36 Our Color Care line is here. Meet the silicone-free solution that protects your color and improves the health of your hair. For highlighted hair, choose the Light shade Color Care Whipped Glaze. #OutsmartYourColor

37 When you hear our new Color Care line makes your hair color last 2x longer than a traditional prestige color care shampoo and conditioner. #OutsmartYourColor

36



37



[Click Here to Download All](#)

launch materials: social video, facebook + instagram

Franchise: Color Care

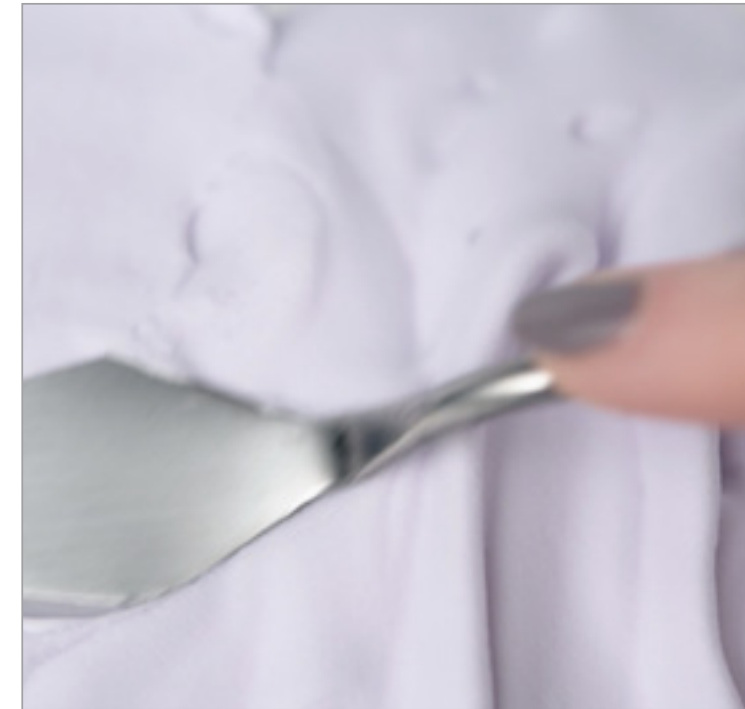
Product: Whipped Glaze

Must use provided copy.

Include @LivingProofInc #crueltyfree #nontoxic #parabenfree #siliconefree
#phthalatefree #sulfatefree

That texture. Color Care Whipped Glaze Light shade adds vibrancy to and
reduces brassiness in blonde hair. #OddlySatisfying #OutsmartYourColor

[Click Image to Download →](#)



Whipped Glaze Light Video